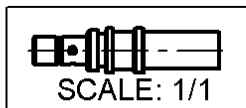
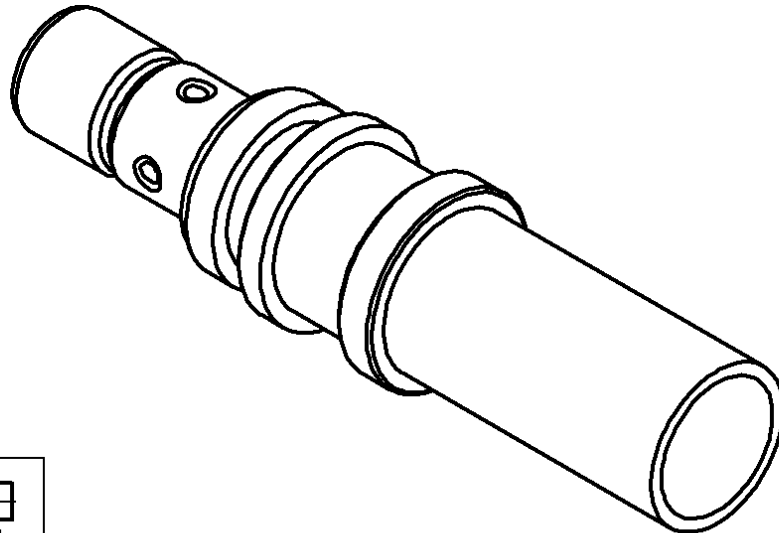
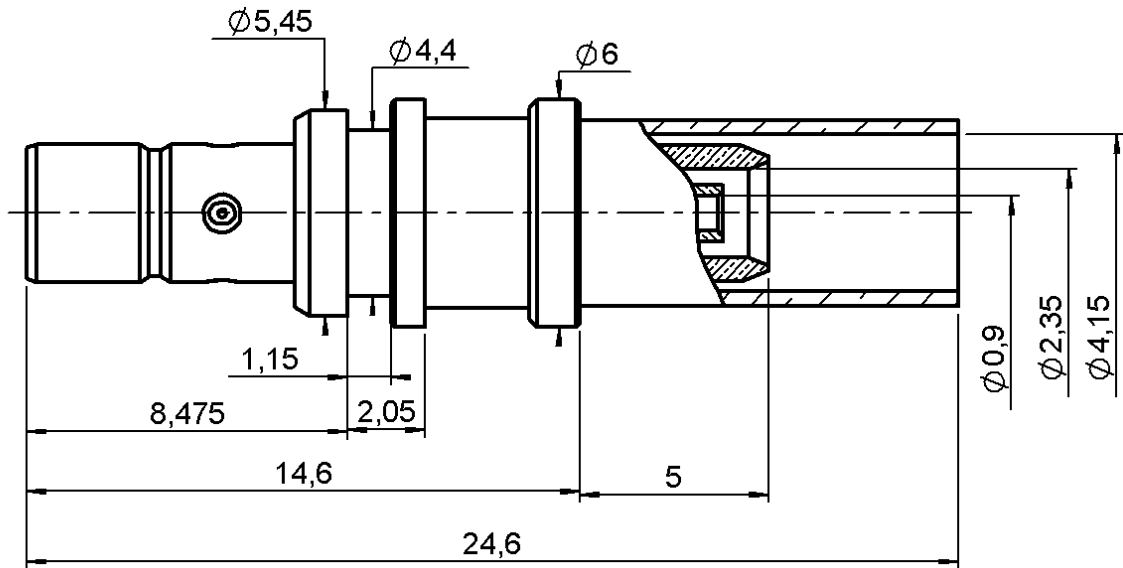


STRAIGHT JACK CRIMP TYPE

R114.246.325

CABLE 3.2/50 S

Series : SMB



All dimensions are in mm.



COMPONENTS	MATERIALS	PLATINGS (µm)
BODY	BRASS	NICKEL 2
CENTER CONTACT	BRASS	GOLD 0.8 OVER NICKEL 2
OUTER CONTACT	-	-
INSULATOR	PTFE	-
GASKET	-	-
OTHERS PARTS	BRASS	NICKEL 2
-	-	-
-	-	-

Issue : A

In the effort to improve our products, we reserve the right to make changes judged to be necessary.



STRAIGHT JACK CRIMP TYPE

R114.246.325

CABLE 3.2/50 S

Series : **SMB**

PACKAGING

Standard	Unit	Other
100	'W' option	Contact us

SPECIFICATION

-

ELECTRICAL CHARACTERISTICS

Impedance		50	Ω
Frequency		0-4	GHz
VSWR	1.15 +	0.000	x F(GHz) Maxi
Insertion loss		0.25	\sqrt{F} (GHz) dB Maxi
RF leakage	- (NA	- F(GHz)) dB Maxi
Voltage rating		335	Veff Maxi
Dielectric withstanding voltage		1000	Veff mini
Insulation resistance		1000	M Ω mini

CABLE ASSEMBLY

Stripping	a	b	c	d	e	f
mm	2.30	5.50	10.2	0.00	7.90	0.00

Assembly instruction : **page 3**

Recommended cable(s)
RTK 031

MECHANICAL CHARACTERISTICS

Center contact retention			
Axial force – Mating end		10	N mini
Axial force – Opposite end		10	N mini
Torque		NA	N.cm mini

Cable retention
- pull off **110** N mini
- torque **NA** N.cm

TOOLING

Part Number	Description	Hexagon
.	.	.
R282.293.000	CRIMPING TOOL	-
R282.235.911	CRIMPING DIES	Square 1.2 Hex:4.3

Recommended torque			
Mating		NA	N.cm
Panel nut		NA	N.cm
Clamp nut		NA	N.cm
A/F clamp nut		0.000	mm

Mating life		100	Cycles mini
Weight		2.300	g

OTHERS CHARACTERISTICS

**THIS COAX CAN BE USED WITH
FAKRA2 JACK HOUSING R197.132. 90
(replaced the _ by the coding letter)**

ENVIRONMENTAL

Operating temperature		-40/+110	$^{\circ}$ C
Hermetic seal		NA	Atm.cm3/s
Panel leakage		NA	

Issue : A

In the effort to improve our products, we reserve the right to make changes judged to be necessary.



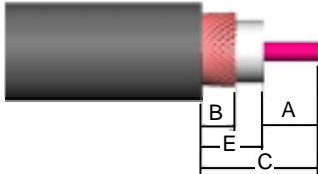

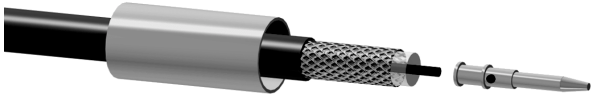
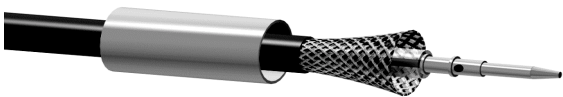
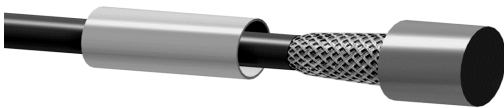

STRAIGHT JACK CRIMP TYPE

R114.246.325

CABLE 3.2/50 S

Series : SMB

RECOMMENDED MOUNTING PROCEDURE

	
<p>1</p> <ul style="list-style-type: none"> • Slide the ferrule onto the cable • Strip the cable 	
<p>2</p> <ul style="list-style-type: none"> • Slide the centre contact on until it bottoms against the cable dielectric • Crimp the centre contact With crimping tool R282.293.000+diesR282.235.911 (square1.2) 	
<p>3</p> <ul style="list-style-type: none"> • Fan the braid 	
<p>4</p> <ul style="list-style-type: none"> • Slide the cable into the body until it bottoms against insulator 	
<p>5</p> <ul style="list-style-type: none"> • Slide the ferrule over the braid • Crimp the ferrule with crimping tool R282.293.000 or crimping tool M22520/5-01 +diesR282.235.911(Hex:4.30) 	

Issue : A

In the effort to improve our products, we reserve the right to make changes judged to be necessary.

